

CEILING SCHEDULE				
CODE	DESCRIPTION	ACOUSTIC RATING	ADDITIONAL INSULATION	COMMENTS
CE01	PLASTERBOARD; FLUSH SET	TBC		
CE02	FIBRE CEMENT; FLUSH SET	TBC	INS04	
CE03	ACOUSTIC DROP-IN TILES; PREFINISHED; 600x1200	TBC	INS04	
CE04	DROP-IN TILES; PREFINISHED; 600x1200	TBC	INS04	

NOTE: ADDITIONAL ACCESS PANELS TBC TO ENGINEER'S REQUIREMENTS. ACOUSTIC RATING ACOUSTIC CONSULTANT'S REPORT.

GENERAL NOTE:

- THE CONTRACTOR SHALL CAREFULLY STUDY AND COMPARE THE REFLECTED CEILING PLANS WITH: ELECTRICAL, HYDRAULIC, MECHANICAL, FIRE PROTECTION DRAWINGS, ARCHITECTURAL FINISHES SCHEDULE.

- CONTRACTOR TO IMMEDIATELY NOTIFY THE ARCHITECT OF ANY ERROR, INCONSISTENCY OR OMISSION.

- REFER ELECTRICAL, COMMUNICATION, SECURITY AND FIRE PROTECTION DRAWINGS FOR LOCATIONS OF CEILING OR WALL MOUNTED SMOKE DETECTORS, COMMUNICATIONS DEVICES, SECURITY ALARMS, FIRE ALARM DEVICES, ETC. SOME OF THESE ITEMS ARE SHOWN ON THE ARCHITECTURAL PLANS AS WELL.

- ACCESS PANELS (WHERE APPLICABLE):
A. THE CONTRACTOR SHALL VERIFY THAT ACCESS PANELS (OF APPROPRIATE SIZE AND TYPE) ARE INSTALLED IN GYPSUM BOARD, CEMENT PLASTER, METAL AND OTHER NON-ACCESSIBLE TYPE CEILING AND SOFFITS WHERE ACCESS, SERVICE OR ADJUSTMENT TO ITEMS (INCLUDING MECHANICAL, PLUMBING, ELECTRICAL, COMMUNICATIONS, SECURITY ETC.) ABOVE THE CEILINGS MAY BE REQUIRED.

B. THE GENERAL CONTRACTOR SHALL BE RESPONSIBLE FOR COORDINATING WITH ALL SUBCONTRACTORS AND WITH THE OWNER'S OR TENANT'S VENDORS TO ENSURE THAT THE MINIMUM NUMBER OF ACCESS PANELS ARE PROVIDED (BY THE SHARING OF ACCESS PANELS WHEREVER POSSIBLE),

C. LOCATIONS OF ALL ACCESS PANELS MUST BE APPROVED IN ADVANCE BY THE ARCHITECT TO ENSURE THAT THE "AESTHETIC DESIGN INTEGRITY" OF CEILINGS AND SOFFITS IS MAINTAINED,
D. PRIOR TO INSTALLATION OF ANY ACCESS PANELS, THE GENERAL CONTRACTOR SHALL SUBMIT COORDINATION DRAWINGS (SHOWING THE PROPOSED LOCATION AND SIZE OF EACH ACCESS PANEL) TO THE ARCHITECT FOR APPROVAL.

E. ACCESS PANELS SHALL BE THE FIRE RATED TYPE EQUAL TO THE RATING OF THE CEILING OR SOFFIT IN WHICH THEY OCCUR WHERE APPLICABLE.
F. CONTRACTOR TO ALLOW FOR ADDITIONAL PROVISIONS OF CEILING ACCESS PANELS WHERE REQUIRED TO SUIT FUTURE SERVICES INSTALLATION.

- WHERE EXISTING LAY-IN CEILINGS ARE REMOVED AND RE-INSTALLED, THE CONTRACTOR SHALL TAKE CARE NOT TO DAMAGE EITHER THE CEILING TILES OR THE GRID. ANY DAMAGED TILES OR GRID SHALL BE REPLACED WITH NEW MATERIAL. THESE MATERIALS SHALL MATCH THE EXISTING IN A UNIFORM MANNER FOR COLOR, TEXTURE, PATTERN ETC. IF UNIFORMITY CANNOT BE ACHIEVED THEN THE CONTRACTOR SHALL REPLACE ALL THE MATERIAL IN THE SPACE, AS APPROVED BY BOTH THE TENANT OR OWNER AND THE ARCHITECT.

- ANY PENDANTS SUSPENDED FROM THE CEILING TO BE CONFIRMED STRUCTURALLY AND VIBRATIONALLY WITH CONSULTANTS PRIOR TO INSTALLATION.

- CONTRACTOR TO CONFIRM OPENING SIZE WITH EQUIPMENT MANUFACTURER PRIOR TO CONSTRUCTION OF WALL.

- CONTRACTOR TO ADHERE TO ALL INFECTION CONTROL PROTOCOL AND DUST CONTAINMENT MEASURES WHERE REQUIRED.

- CONTRACTOR TO CONFIRM NUMBER AND LOCATION OF ALL FIRE SERVICES WITH FIRE ENGINEER PRIOR TO INSTALLATION. REFER TO FIRE ENGINEER'S DOCUMENTS.

- INFECTION PREVENTION AND CONTROL (WHERE APPLICABLE):
PRIOR TO WORKS COMMENCING, THE CONTRACTOR IS REQUIRED TO PROVIDE AS PART OF THE CONSTRUCTION MANAGEMENT PLAN AN INFECTION CONTROL PLAN (ICP), FOR ENDORSEMENT BY THE PRINCIPAL. THE ICP MUST PROVIDE THE PROPOSED METHODOLOGY FOR INFECTION PREVENTION AND CONTROL MANAGEMENT THAT WILL IMPLEMENTED FOR THE WORKS IN ACCORDANCE WITH THE AUSTRALIAN HEALTH FACILITIES GUIDELINES PART D – INFECTION AND PREVENTION CONTROL, 900 – CONSTRUCTION AND RENOVATION REV 7.0, 01 MARCH 2016.

- AUTOMATIC SLIDING DOORS:
1. CONTRACTOR TO CONFIRM WITH DOOR SUBCONTRACTOR REQUIREMENT FOR ADDITIONAL STRUCTURAL STEEL, COLUMNS, AND DOOR HEAD IN ACCORDANCE WITH DOOR MANUFACTURER'S RECOMMENDED DETAILS.

Notes

The information contained in this document is copyright and may not be used or reproduced for any other project or purpose.

Verify all dimensions and levels on site and report any discrepancies to dwp for direction prior to the commencement of work.

Drawings are to be read in conjunction with all other contract documents.

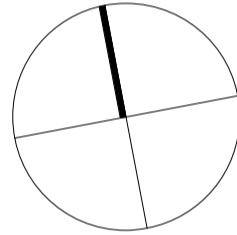
Use figured dimensions only. Do not scale from drawings. dwp cannot guarantee the accuracy of content and format for copies of drawings issued electronically. The completion of the Issue Details Checked and Authorised section is confirmation of the status of the drawing. The drawing shall not be used for construction unless endorsed 'For Construction' and authorised for issue.

© dwp Australia Pty Ltd
Registered Business Name dwp Australia ABN 37 169 328 018
Nominated Architect Angus Rose NSW ARB 8341.

© Copyright 2011 dwp.
ALL RIGHTS RESERVED.
Reproduction prohibited unless authorised in writing by dwp.

STANDARD ABBREVIATIONS

NOTE: CONTRACTOR TO INSULATE ALL NEW CEILINGS (R4.1 ACOUSTIC CEILING BATTS)



DESIGN DEVELOPMENT

NOT TO BE USED DURING CONSTRUCTION

F	100% DD DOCS	27.05.22	BW	DH
E	FOR COORDINATION	26.05.22	BW	DH
D	90% DD DOCS	13.05.22	BW	AW
C	FOR COORDINATION	28.04.22	BW	AW
B	70% DRAFT TENDER UPDATE	22.04.22	BW	AW
A	70% DRAFT TENDER	14.04.22	BW	AW

Issue Description Date Chk Auth
Architect/ Designer
dwp
www.dwp.com

Client
NSW HEALTH INFRASTRUCTURE

Project
MUSWELLBROOK HOSPITAL
REDEVELOPMENT STAGE 3
Location
BRENTWOOD ST, MUSWELLBROOK
NSW 2333

Project Number
21-0338

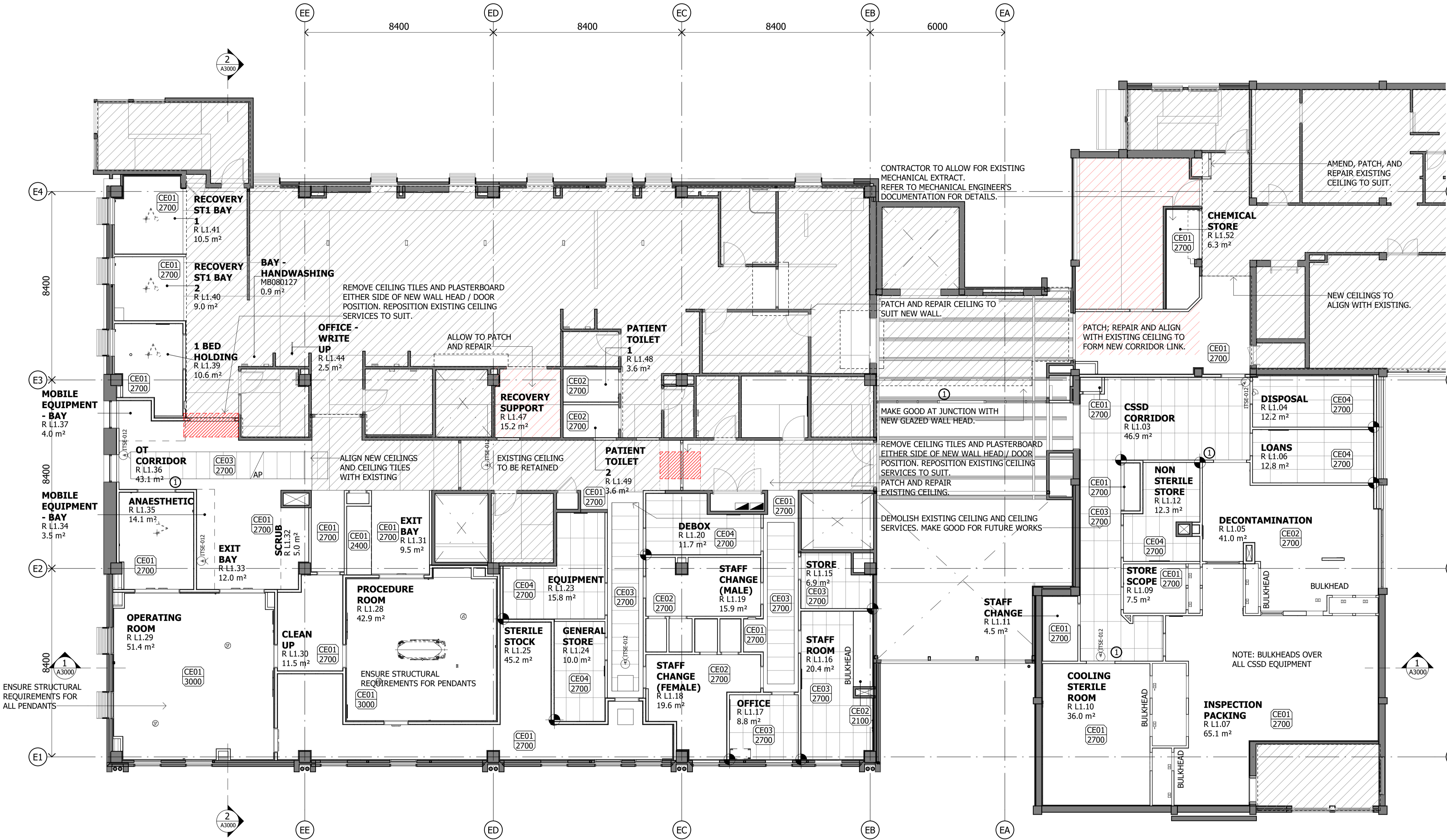
Drawing
**REFLECTED CEILING
PLAN - LEVEL 1**

Scale (A1) Date Printed
As indicated 27/05/2022 2:52:43 PM
Drawing Number Issue

A1805

F

dwp



1
A2000
REFLECTED CEILING PLAN - LEVEL 1
1 : 100



Health
Infrastructure

DETERMINED – APPROVAL

REF Approval No: 22/2022

Date: 19/7/2022

Signed by:

20309.